

# Modernization Outreach Call

---

August 25, 2022

# **Modernization Outreach Call — Agenda**

---

- 1 | General Program Reminders**
- 2 | RSA SecurID Soft Tokens**
- 3 | Platform Upgrades - Business Blackout**
- 4 | Single Family Pool Delivery Module (SFPDM) Adoption Highlights**

# General Program Reminders

---

# General Program Reminders

## DIGITAL COLLATERAL PROGRAM

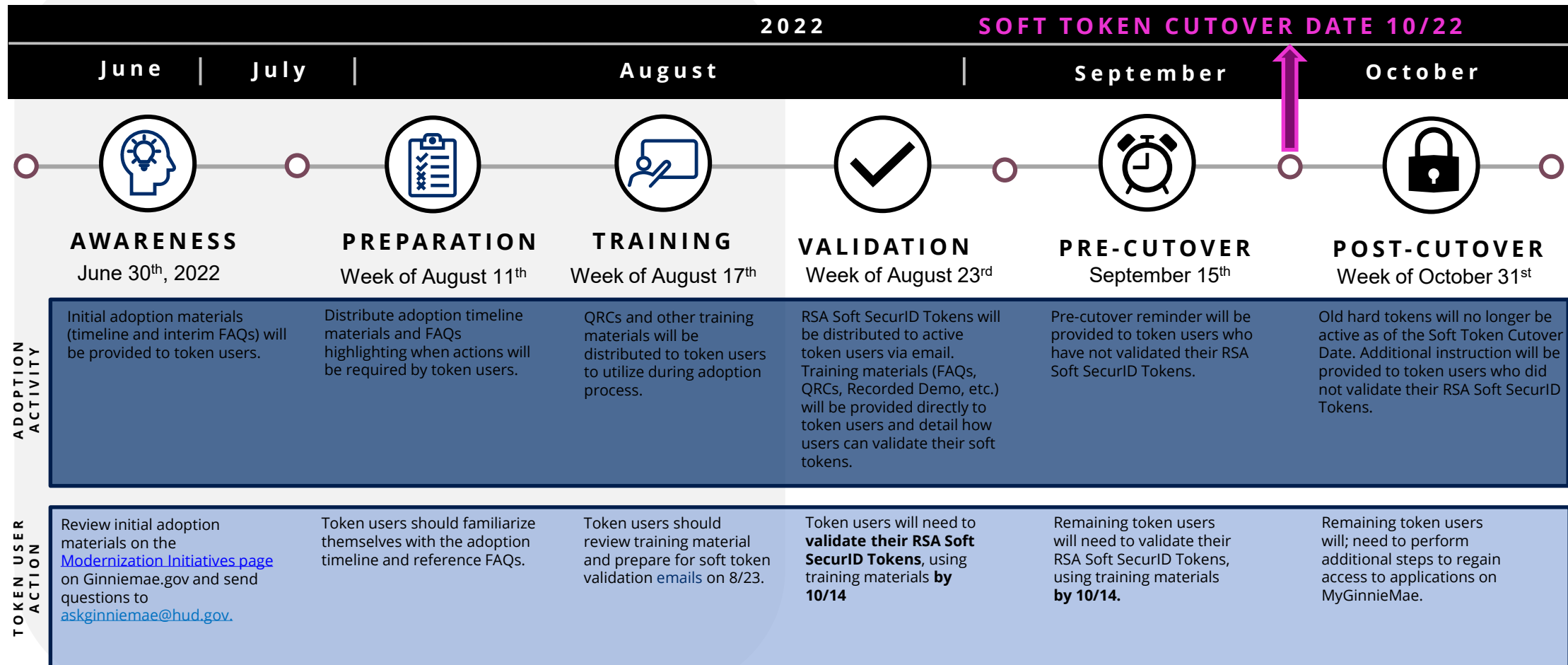
- As of June 20, 2022, the application process has been reopened to new applicants
- Rolling admission is available to Issuers to submit applications based on their readiness.
- The following resources are available for additional support:
  - [DCPA@hud.gov](mailto:DCPA@hud.gov) for Issuers currently enrolled in the Digital Collateral Program
  - For Issuers not currently enrolled and have general questions about the program, submit emails to [Lynne.Chandler@hud.gov](mailto:Lynne.Chandler@hud.gov)

# RSA SecurID Soft Token Application

---

# RSA SecurID Soft Tokens

## PHASED RSA SECURID SOFT TOKEN ADOPTION TIMELINE





# Next Steps

---

## REVIEW REFERENCE MATERIALS

Review reference materials posted to the [Modernization Initiatives](#) page on GinnieMae.gov

- [RSA SecurID Token Adoption Pre-Cutover FAQs](#)
- [QRC-RSA: 1.0](#) How to Install and Authenticate Soft Token – **Desktop**
- [QRC-RSA: 2.0](#) How to Install and Authenticate Soft Token – **Mobile**

## LOOK FOR THE TOKEN EMAIL

Tokens are being sent to existing token holders via email from [GinnieMaeDesk@deloitte.com](mailto:GinnieMaeDesk@deloitte.com)

## VALIDATE NEW SOFT TOKEN

Token users must validate the RSA Soft SecurID Tokens, **by 10/14**

## HOLD FOR PLATFORM UPGRADES

Tokens will not be active for use until Platform Upgrades are complete on **10/25**

**QUESTIONS?** please email [askGinnieMae@hud.gov](mailto:askGinnieMae@hud.gov)

# Platform Upgrades

---





# Platform Upgrades

---

*Ginnie Mae is rolling out major upgrades to the Securitization Platform in October 2022 to consolidate data centers and migrate to the cloud. These upgrades will generate an improved user experience, more efficient processing, and allow for the deployment of desirable business tools like RSA SecurID Soft Tokens.*

## WHAT IS THE IMPACT?

The cloud migration and testing of the Securitization Platform is underway and requires periodic portal outages and a forthcoming **Business Blackout** period affecting **all** Ginnie Mae business.

## WHEN IS THE BUSINESS BLACKOUT?

The *Business Blackout* will begin **Wednesday, 10/19** with some transactions being cutoff **as early as 2 p.m. (ET)**. Ginnie Mae will resume normal business activities after final validation exercises are complete on **Tuesday, 10/25**.

## WHERE CAN I GET MORE INFORMATION?

A **Platform Upgrades** section has been added to the [Modernization Initiatives](#) page of GinnieMae.gov. There will be a specific timeline, FAQs, and new Modernization Bulletins posted mid-September to provide detailed guidance for how to prepare. No additional details are available at this time.

# SFPDM Adoption Highlights

---

# SFPDM Adoption - Timeline

Ginnie Mae is currently in the midst of its 18-month transition of Single Family pooling activities from GinnieNET to SFPDM. The following timeline outlines major milestones and expectations throughout this transition:

Jan 2022



## APM Release

APM 22-02 announced the start of the 18-month transition to SFPDM and the MISMO-compliant PDD

Apr 2022



## SFPDM Rollout

Ginnie Mae rolled out SFPDM to all Single Family and Manufactured Housing Issuers

May 2022  
SFPDM Enhancements

Dec 2022



## End of Primary Adoption Period

Ginnie Mae expects all SF and MH Issuers to have a working PDD and/or be pooling in SFPDM by the end of 2022

Case Management\*

Mid 2023



## GinnieNET Cutover

GinnieNET will no longer be used for Single Family pooling; only SFPDM will be available to Issuers for Single Family pooling

### Vendor Progress



- Ginnie Mae is continuing to work with Vendors and track their PDD Software development progress
- 5 out of the 9 Vendors** currently testing in the Validation & Testing Tool (VTT) have passed PDD Validations

### Manual Entry Issuers



- Issuers planning to deliver via Manual Entry **are encouraged to start pooling in SFPDM now!**
- Manual Entry Issuers are not required to develop the PDD

# SFPDM Adoption – GinnieNET to SFPDM

Ginnie Mae is transitioning **Single Family and Manufactured Housing pooling activities\*** from GinnieNET to the new Single Family Pool Delivery Module (SFPDM). The following table outlines important details regarding this transition:



## SF Pooling in GinnieNET



## SF Pooling in SFPDM

	SF Pooling in GinnieNET	SF Pooling in SFPDM
CHANGES	<b>SUBMISSION METHODS</b>	SF Pools can be delivered via manual entry or by importing a <b>Legacy Flat File (.txt)</b>
	<b>POOL/LOAN DATA EXPORT</b>	Data for pools submitted can be exported in <b>Flat File format (.txt)</b>
	<b>RG and ET POOL TYPES</b>	GinnieNET supports the submission of RG and ET Pool Types
NO CHANGES	<b>INITIAL AND FINAL CERTIFICATION</b>	Pools submitted through GinnieNET are certified in <b>GinnieNET</b> by Document Custodians
	<b>HUD FORMS</b>	HUD Forms, including 11705 and 11706, are available for download in <b>PDF format***</b>
	<b>POOL TRANSFERS (PIIT)</b>	GinnieNET supports pool transfers. The transfer must be completed in GinnieNET if originally initiated in GinnieNET

**Additional note:** The transition to SFPDM does not impact RFS processes

\*This transition only impacts new production, the management of pools already submitted through GinnieNET will remain in GinnieNET

\*\*Until the end of the SFPDM 18-Month Adoption Window, Issuers will be able to export their pool data as .txt files from GinnieNET

\*\*\*HUD Forms available in PDF format: 11705, 11706 (Initial Certification), 11706 (Final Certification), 11711B (Certification and Agreement), Bond Finance Pool Certification, Schedule A of Serial Note Pools

# SFPDM Adoption – Next Steps and Support

Single Family and Manufactured Housing Issuers should take the following steps to complete the transition from GinnieNET, to begin submitting pools in SFPDM:

## 1 Review Resources

Issuers should review the PDD Implementation Guide and additional SFPDM Adoption resources on GinnieMae.gov within the Modernization Initiatives page and under the “SFPDM-MISMO” dropdown.

## 3 Test PDD in the VTT \*

Issuers should leverage Ginnie Mae’s Validation & Testing Tool (VTT) to test their PDD files *prior to* pooling in SFPDM. This will include validation of the XML document structure and validation against the Ginnie Mae Edits (Business Rules).

## 2 Develop the PDD \*

Issuers should engage their IT teams and any software Vendors to prioritize and complete development of the PDD.

## 4 Pool in SFPDM

Issuers can start pooling in SFPDM once they have a working PDD file. Issuers can also manually enter pool and loan data if they do not intend to import pool data using the PDD.

The following resources are available for additional support:



### Support Mailboxes

**PDD / VTT Support:**  
GinnieMae\_MISMO\_Support@hud.gov

**SFPDM Support:**  
Ginniemae1@bnymellon.com



### Helpdesk Call Center

Dial 1-833-466-2435  
**PDD / VTT Support:** Select 3 then 6  
**SFPDM Support:** Select 1 then 1